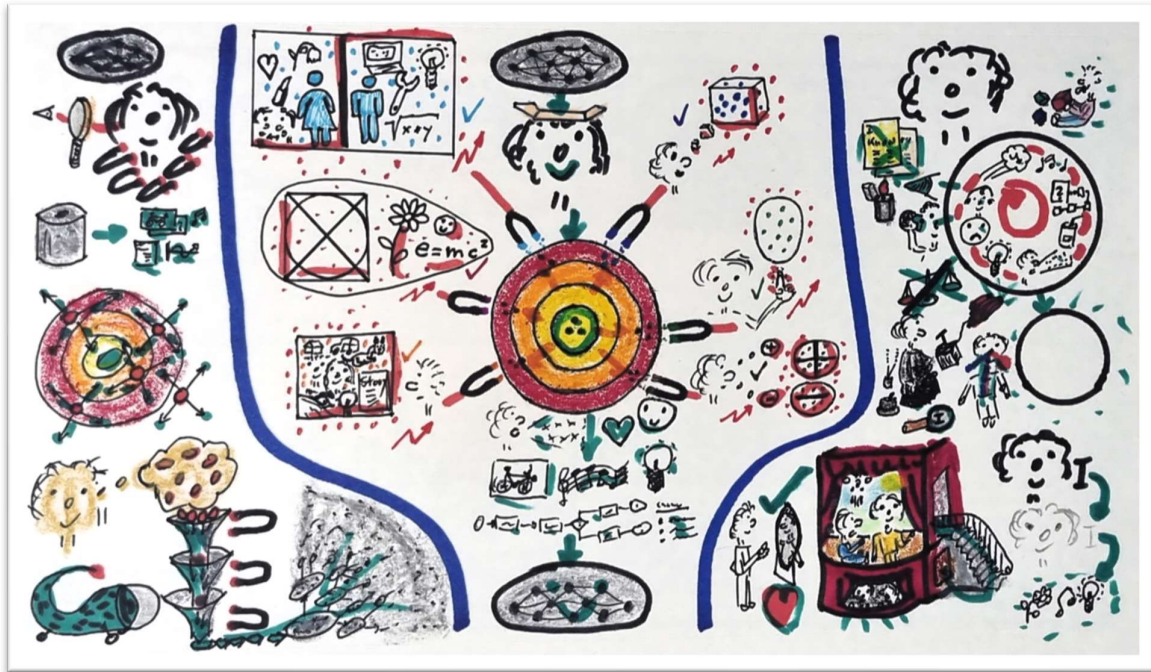


## Season 3, Sequel 4

*Intuition, Cognitive Bias and Mindplaying.*



This sequel is about cognitive bias, meaning the intuitive results of a human collaborating with an AI are falsified or changed by cognitive bias, by filters that the human brain has.

So the standard approach is AI gives information to the human in a way the human can understand, about a question, about a problem. Then the human consumes that and taps their intuition with the various ways it can tap the intuition and expresses the intuitive outcomes in different ways: like language, like feelings, like ideas, like music or melodies or noise, like pictures, like logic, like data. And the AI takes that and feeds it back into the network to find a solution based on these new insights.

But what's the bias? Biases are like magnets which are pushing or pulling the result away from the center of the intuition to some false or limited intuitions. And that is not intended and not good. So which biases do we have?

One of the main biases is the inside-the-box bias: you tend to think inside the box and don't accept intuition outside of your thinking box. Or you have a belief system, and everything that confirms your belief system is good, and that which does not, not. Or there is the halo effect: something is good, then everything is good about it. The other way around. Or only things that look like you or like your life or like things you like are good, and the rest, which is different, are not. Or the beauty bias: where only things that you consider beautiful, mathematically beautiful, optically beautiful, are accepted. Or the stereotyping bias: where you only accept stuff based on your stereotypic understanding.

So what can the AI do? The first thing: the AI observes the human it is working with and learns about their biases. The second thing: it produces data as input which are

as close as possible to this human's way of thinking and don't produce biases. The next one: if there are intuitive results, it always challenges them, to change the result in this and that direction, to find whether that is a biased result or a real, stable result. And the next thing: it takes the intuitive output, which is a conglomerate of all kinds of things, and puts it through filters. For each bias, it has a filter, and tries to reduce the effect of that bias, or to see if there is the effect of a bias. Only then the final result is given back into the AI network.

So that's what the AI can do. What the human can do: it can be playful, or must be playful, because intuition needs playfulness. It must put away its story, its "I already know", delete that. And then it must observe its mind: stuff is going on in the mind, things, feelings, thoughts going in circles. So the human doesn't judge it, it just observes that and accepts it as a first step.

The second step is: the human learns to empty its mind, by little tricks like blowing it up, or meditating, or breath techniques, or investigations into who I am. And so, empty the mind and give space for more intuition.

The next important thing: the human learns to accept themselves, love themselves, accept themselves as they are. Then in the theater of the personality, also the locked-away parts in the basement of the self, the parts the person doesn't want to see or hear, have to be accepted.

The last step: with all of that, the strong feeling of an "I", who I am, gets weaker and foggy, and finally disappears to a pure awareness of what is there. Which is the best approach for intuition at all. With that, humans are strongly enabled to collaborate with AI.